

Epsi/Mu[®]

Software v5.0.

Technical Details
Release 12.2020





Software v5.0.

New Features: Overview

User Graphic Interface

- *New graphic displays*
- *Plugin framework*

Data Processing algorithms

Measurement Uncertainties

VNA Interface and Calculation

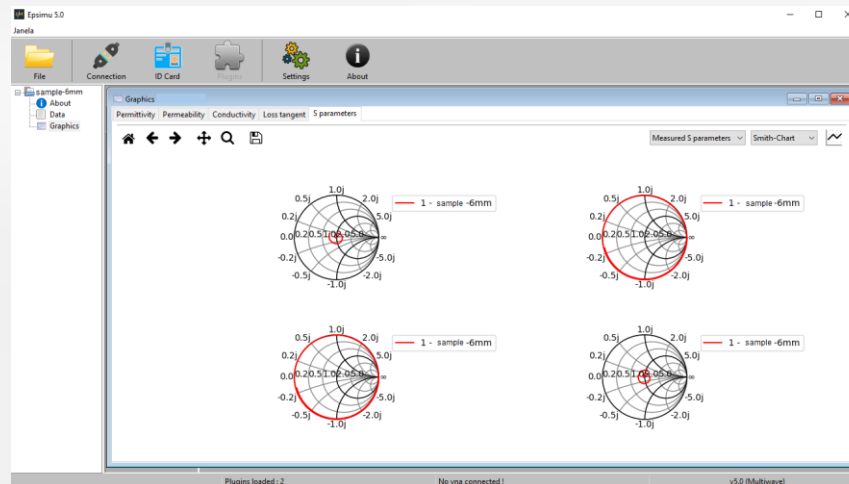


User Graphic Interface

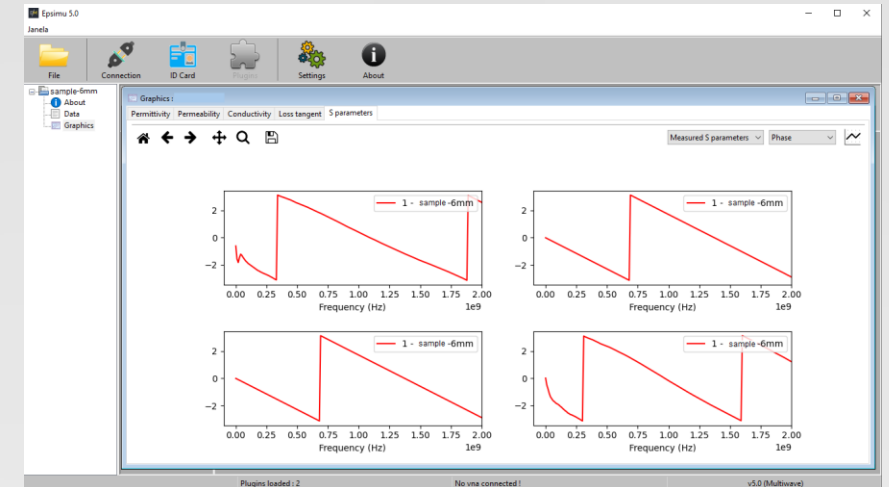
New Graphic Displays

- Add or remove measurement uncertainties from graphics.
- Add several open measurements to the same graphic for comparison.
- Several displays of S-Parameters: Smith Chart, Real Part, Imaginary Part, Magnitude, Phase.
- Display Average of Permittivity and Permeability direct/indirect curves.
- Measurement import in Excel, TXT and S2P file; export to Excel and TXT formats.

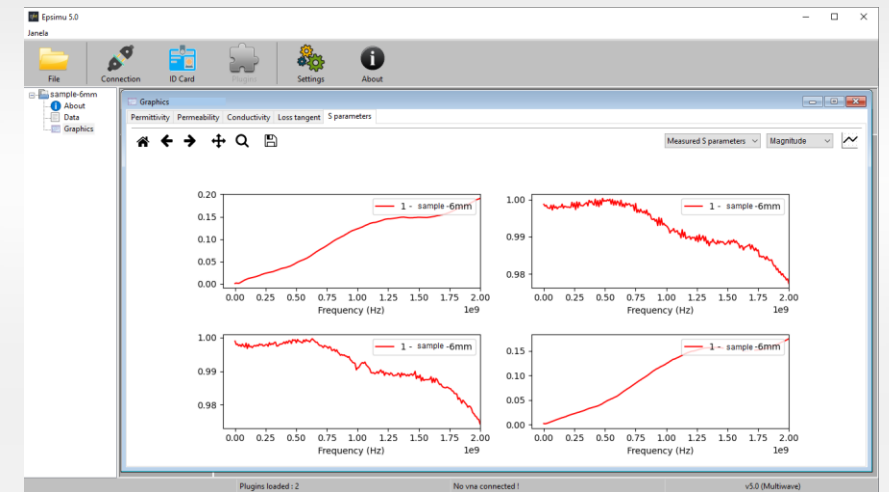
Smith Chart



Phase



Magnitude

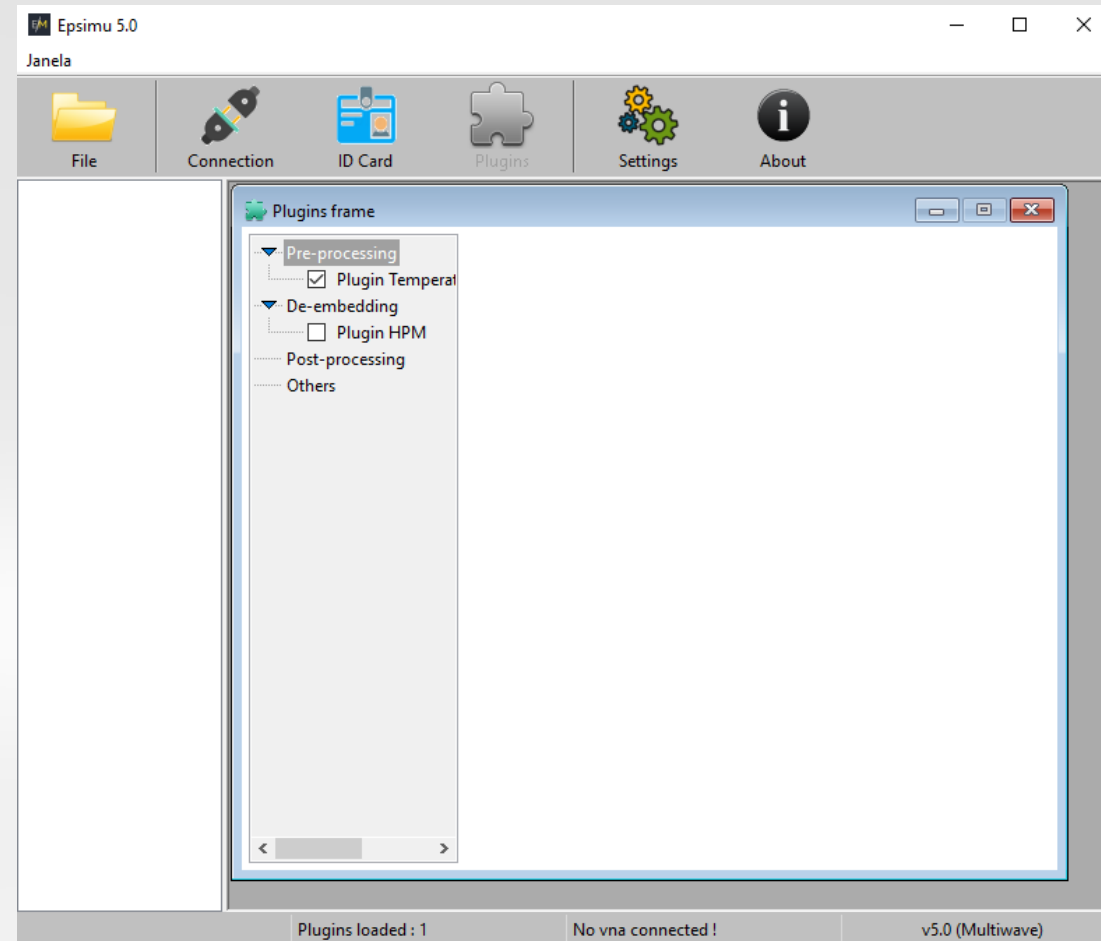


User Graphic Interface

Plugin Framework

Activate or deactivate your installed plugins

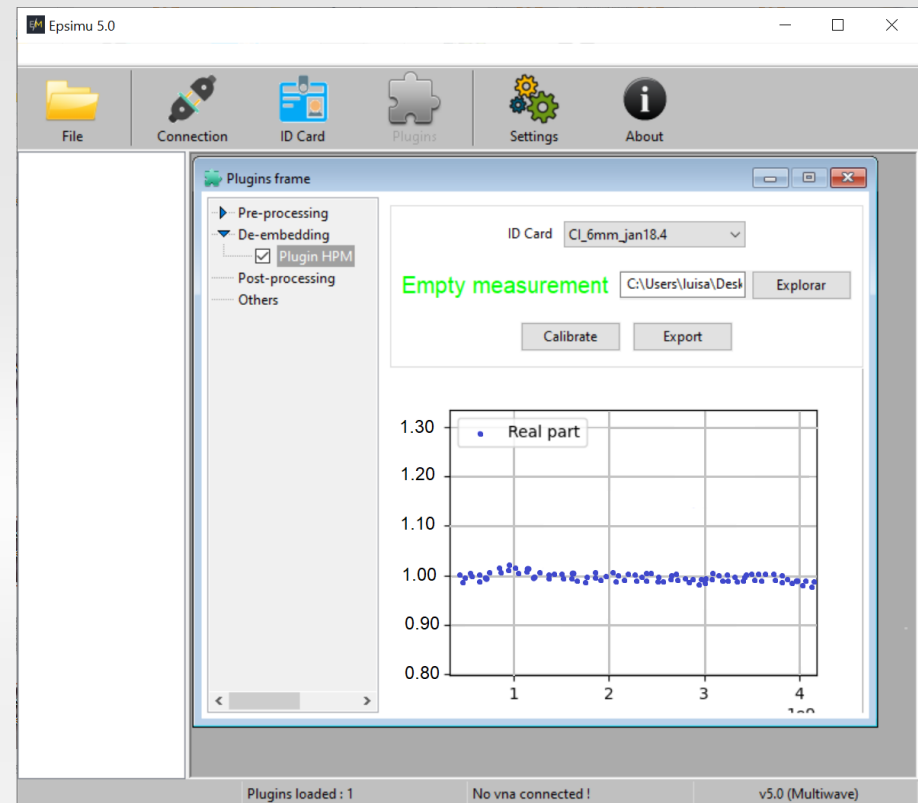
- Pre-processing (e.g.: Temperature Control)
 - De-embedding (e.g.: HPM method)
 - Post-processing
 - Other
- Plugins on demand



New Data Processing Algorithms

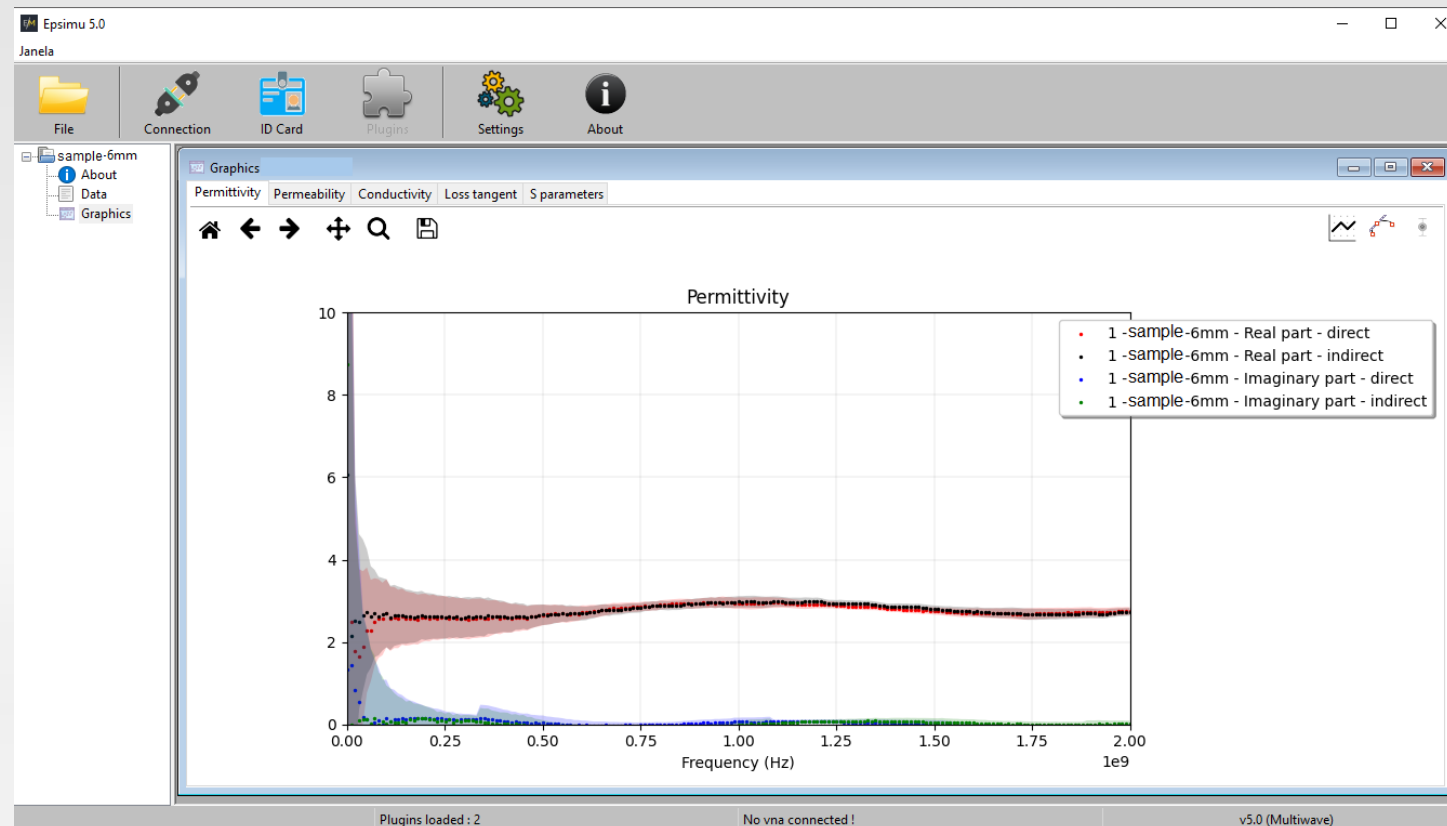
- *Nicolson-Ross Weir, magnetic*
- *Nicolson-Ross Weir, non-magnetic*
- *NIST Iterative Methods, magnetic and non-magnetic*
- *High Precision Method (HPM) Plugin, including normalization with an "Empty Sample-Holder" measurement*

HPM High Precision Plugin for Low-permittivity materials using EpsiMu[®] PE13



Measurement Uncertainties

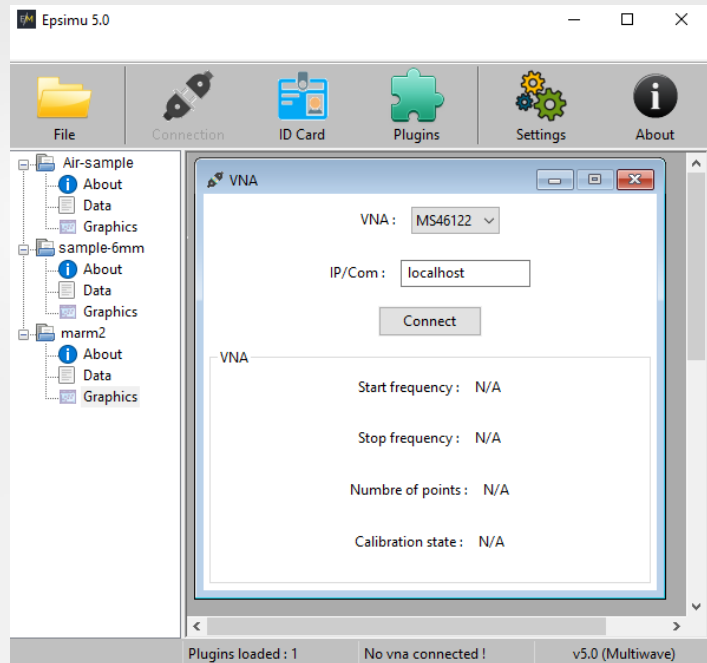
- *Measurement uncertainty based on the VNA's Calibration intrinsic errors and user manipulation*



VNA Interface and Calculation

Direct acquisition from a growing library of compatible Vector Network Analyzers

- Anritsu Shockline MS46122A/B, MS2027, MS2028, MS2036, MS2038;
- Rohde & Schwarz ZNB, ZVA, ZVL13
- Customizable plugin to your own VNA on demand



Possibility to re-calculate with other saved ID cards, directly from the Data tables.

